

IMAGINE A BIG GARDEN AND A PRIVATE SWIMMING POOL IN IT,

lost in green in an absolute serenity...

RESTING AGAINST THE PINEWOOD

facing the blue sea,

EMBRACED WITH THE FRESHNESS OF THE GREEN

and the smell of the nature...



GREEN AND BLUE
is always a perfect match

Torba... The pearl of Bodrum... With its crystalline sea and a rich blue bay, leaning back against the fragrant pinewood... Touristic, high-class, neat and in touch with nature... Surrounded by blue and green all year round...

And... A boutique villa project in Torba, in a central location close to Bodrum city center and airport... Above all, seafront and within walking distance to the sea...



WATCHING THE BLUE,
*resting against
the green...*



SEAFRONT
luxury villas

5+1 and 4+1 triplex, totally detached luxury villas with different floor plans and so with different square meter sizes... Each having a private swimming pool, living rooms with a fireplace, indoor parking garage, pure natural fieldstone piled revetment... **Perfect for living all seasons, just within walking distance to the sea and also seafont...**



INNOVATIVE ARCHITECTURE,
top-end comfort





SPECIALLY DESIGNED
outer space and landscape

The specially designed **sundeck and view terrace, pool and garden**, running on the same ground with the main living room, offer the pleasure of leaning on the lush forest and watching the sea.

Pure natural fieldstone piled revetment and outdoor architectural and decorative lighting, complete all the necessary details for spacious and pleasant living spaces.

ATTRACTIVE,
esthetic and new wave

High-ceiled living rooms and lounges with fireplaces,
with wide facade and seaview...





FOR A COMFORTABLE
and a de luxe life

Spacious and lively seaview bedrooms
with large en-suit bathrooms...



FUNCTIONAL *kitchens*

Ready for use stylish design kitchens with functional details and all white goods...



Le sac
en papier

Ce sac peut contenir
votre attention, vos
vos assiettes, votre
vos espoirs, vos
vos fleurs, votre
votre amitié, votre
vos ballerines, vos
vos idées, vos disques
vos livres, votre
Merci.



ARCHITECTURAL DETAILS

finalising the quality

Bright rooms with courts, additional living spaces that you can turn into **personal hobby spaces and gymnasium rooms...**

Smart details that make life easier like indoor parking garage and **garage passage into the house from the basement floor,** laundry and pressing rooms, storage areas...

LEADING-EDGE TECHNOLOGY,
ecosensitive soul



HIGH TECHNOLOGY AND AUTOMATION
assisting comfort and safety

Smart home technology ensuring you to set and manage your home comfort according to your lifestyle habits...





SUPPORTING
sustainable living

5 KW electric power production with solar energy systems...

Energy saving VRV air conditioning systems and floor heating systems with Daikin heat pumps for heating and cooling and 7-24 hot water...

layout plan



All the 3D visual materials and furnished plans in this catalogue are for information purposes only.
In case of necessity, Ege Group has the right to make changes in the project.

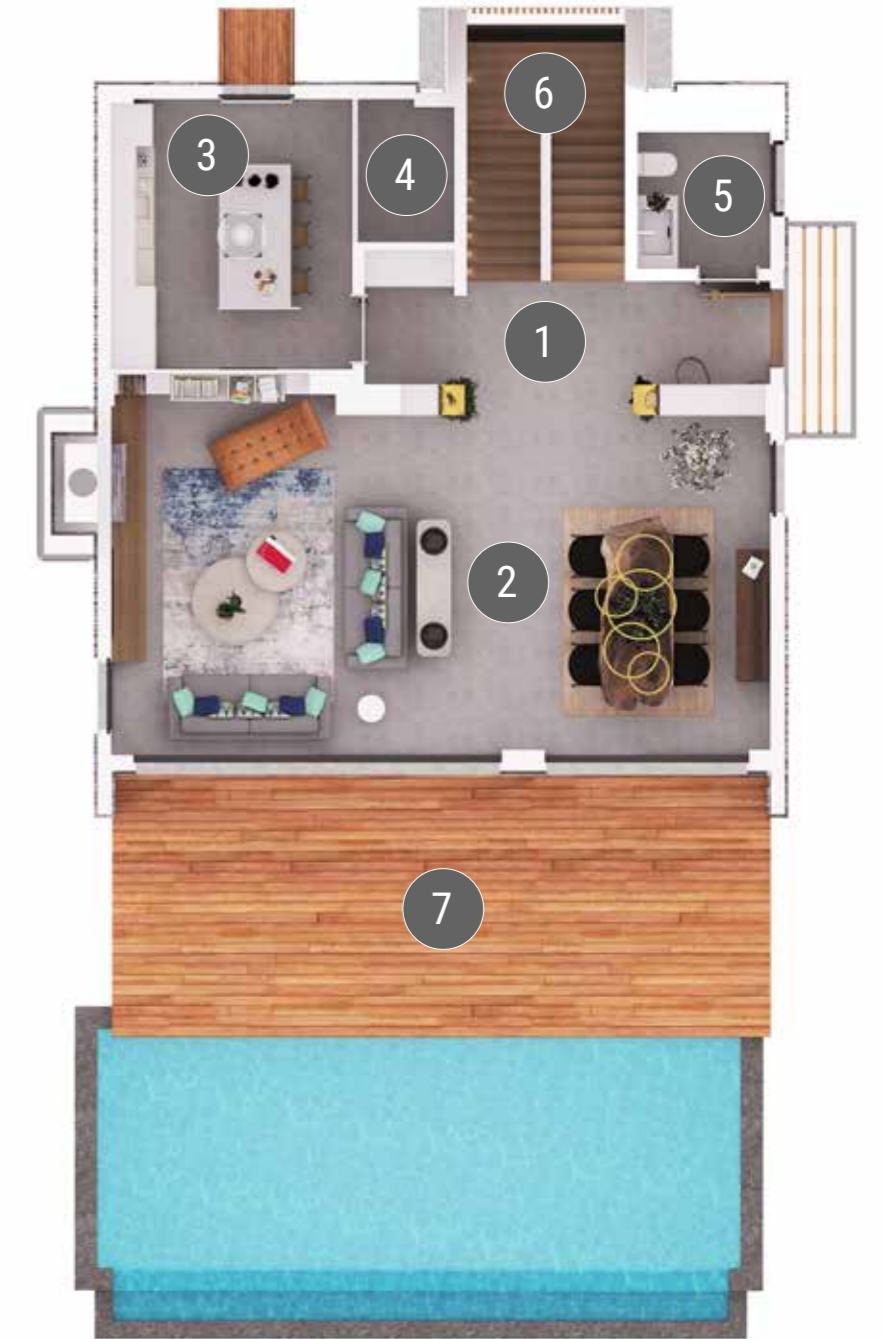
4A/4B

Floor plan



GROUND FLOOR

| | |
|----------------------------|----------------------|
| ① Aisle | 11,23 m ² |
| ② Living Room | 46,60 m ² |
| ③ Kitchen | 13,14 m ² |
| ④ Storeroom | 2,70 m ² |
| ⑤ Guest Restroom | 3,60 m ² |
| ⑥ Stairwell | 7,60 m ² |
| ⑦ Sundeck and View Terrace | 34,20 m ² |



BASEMENT FLOOR

| | |
|------------------|----------------------|
| ① Bedroom | 18,80 m ² |
| ② Bathroom | 6,00 m ² |
| ③ Court | 5,60 m ² |
| ④ Maid's Room | 13,50 m ² |
| ⑤ Bathroom | 2,90 m ² |
| ⑥ Bedroom | 10,70 m ² |
| ⑦ Bathroom | 3,20 m ² |
| ⑧ Court | 3,50 m ² |
| ⑨ Laundry Room | 3,80 m ² |
| ⑩ Aisle | 10,20 m ² |
| ⑪ Stairwell | 7,60 m ² |
| ⑫ Garage Passage | 9,50 m ² |



FIRST FLOOR

| | |
|--------------------------------------|----------------------|
| ① Master Bedroom | 28,50 m ² |
| ② En-suit Bathroom and Dressing Room | 14,40 m ² |
| ③ Bedroom | 18,50 m ² |
| ④ Bathroom | 6,50 m ² |
| ⑤ Aisle and Closet | 6,30 m ² |
| ⑥ Stairwell | 7,60 m ² |
| ⑦ Balcony | 21,60 m ² |



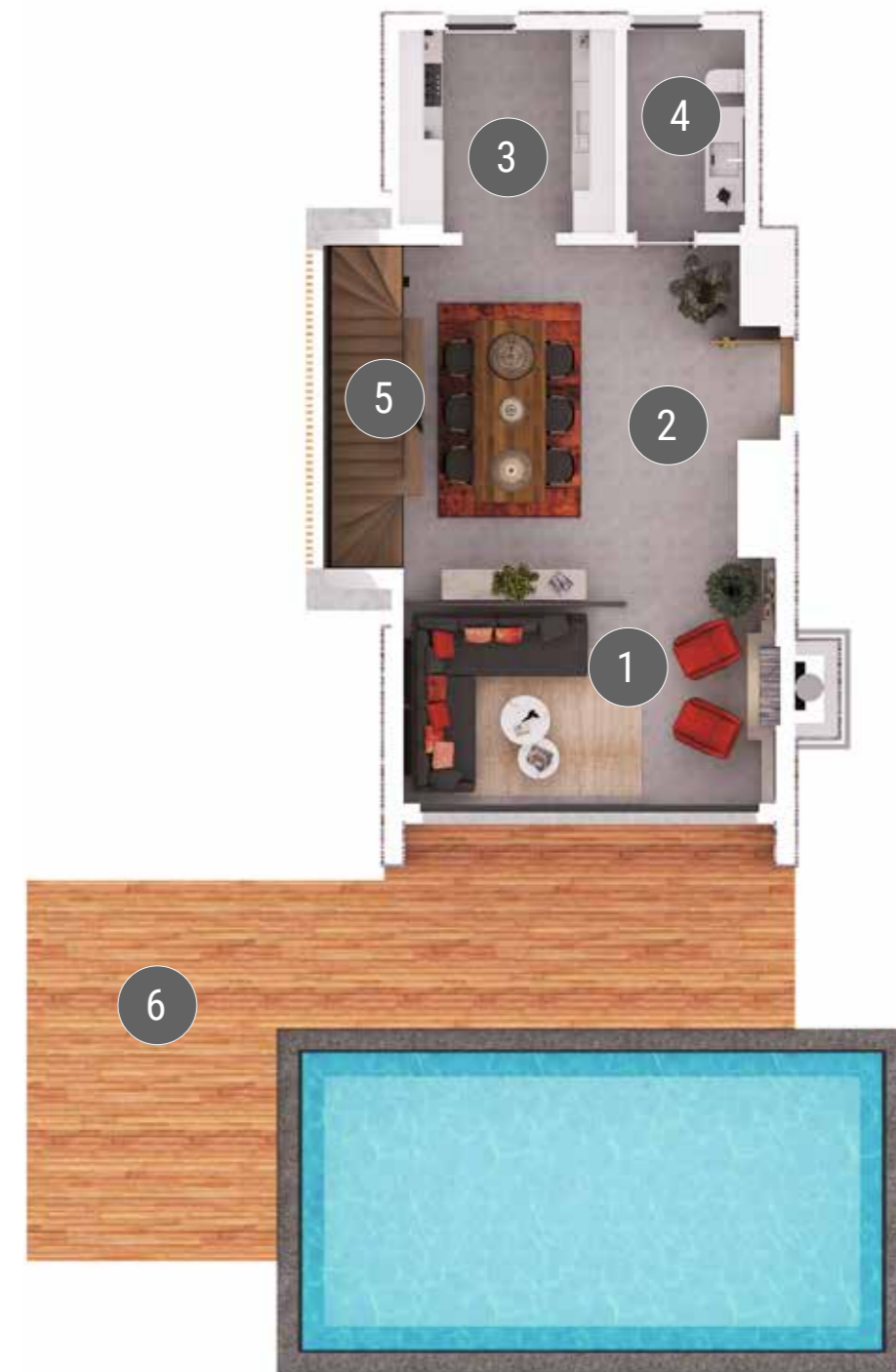
Floor plan

3A



GROUND FLOOR

- | | |
|----------------------------|----------------------|
| ① Living Room | 18,40 m ² |
| ② Hall and Dining Room | 24,40 m ² |
| ③ Kitchen | 8,90 m ² |
| ④ Guest Restroom | 4,90 m ² |
| ⑤ Stairwell | 5,60 m ² |
| ⑥ Sundeck and View Terrace | 33,00 m ² |



BASEMENT FLOOR

| | |
|------------------------|----------------------|
| ① Bedroom | 10,90 m ² |
| ② Bathroom | 4,30 m ² |
| ③ Court | 2,60 m ² |
| ④ Laundry Room/Storage | 7,10 m ² |
| ⑤ Bedroom | 13,00 m ² |
| ⑥ Bathroom | 3,90 m ² |
| ⑦ Court | 3,30 m ² |
| ⑧ Aisle | 11,20 m ² |
| ⑨ Stairwell | 4,50 m ² |
| ⑩ Garage Passage | 11,20 m ² |



FIRST FLOOR

| | |
|--------------------|----------------------|
| ① Master Bedroom | 25,20 m ² |
| ② En-suit Bathroom | 4,10 m ² |
| ③ Bedroom | 13,80 m ² |
| ④ Bathroom | 3,30 m ² |
| ⑤ Aisle | 7,40 m ² |
| ⑥ Stairwell | 5,60 m ² |
| ⑦ Balcony | 13,10 m ² |



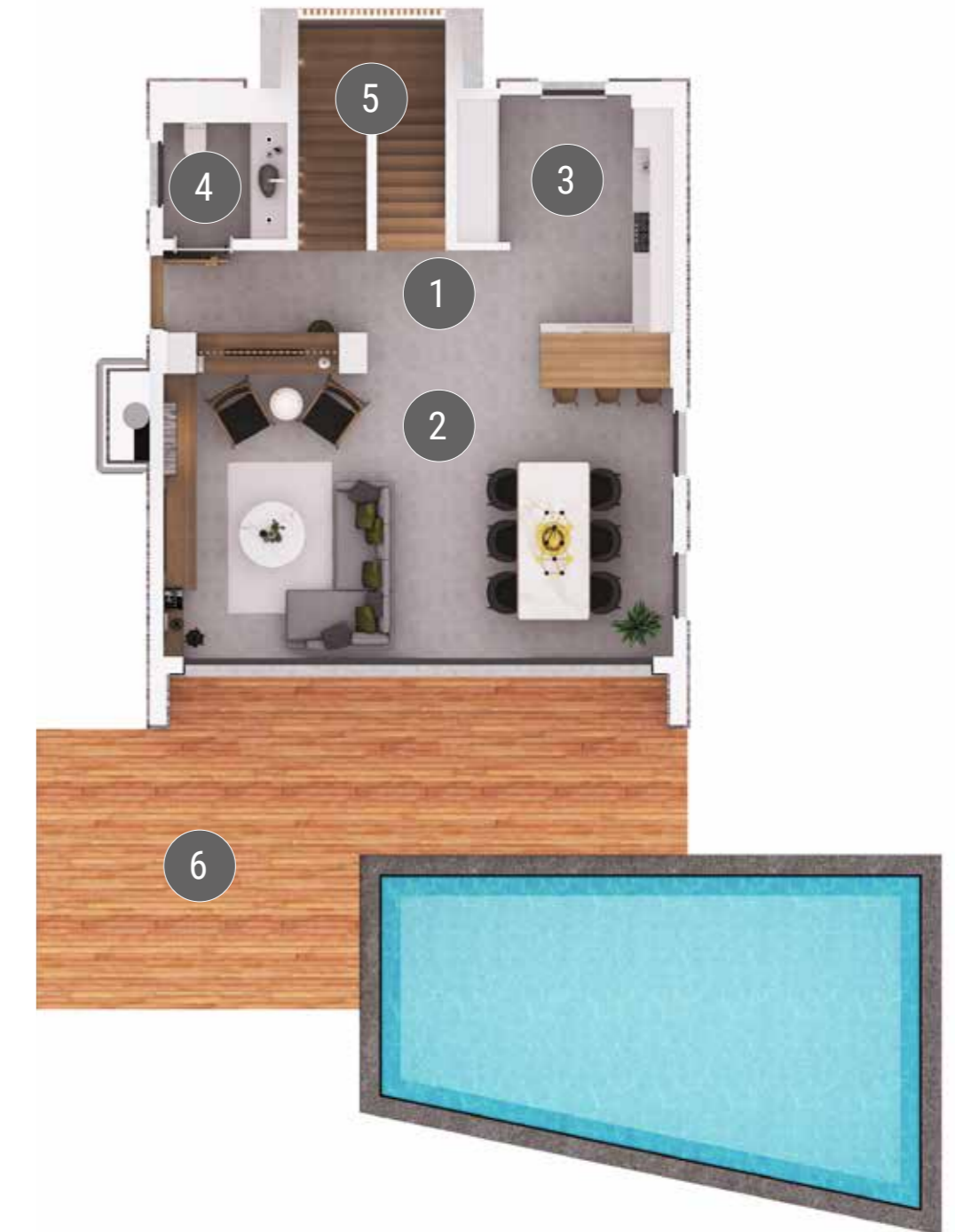
3B/3C

Floor plan



GROUND FLOOR

- | | |
|----------------------------|----------------------|
| ① Hall | 10,50 m ² |
| ② Living Room | 33,50 m ² |
| ③ Kitchen | 11,60 m ² |
| ④ Guest Restroom | 3,30 m ² |
| ⑤ Stairwell | 7,30 m ² |
| ⑥ Sundeck and View Terrace | 33,00 m ² |



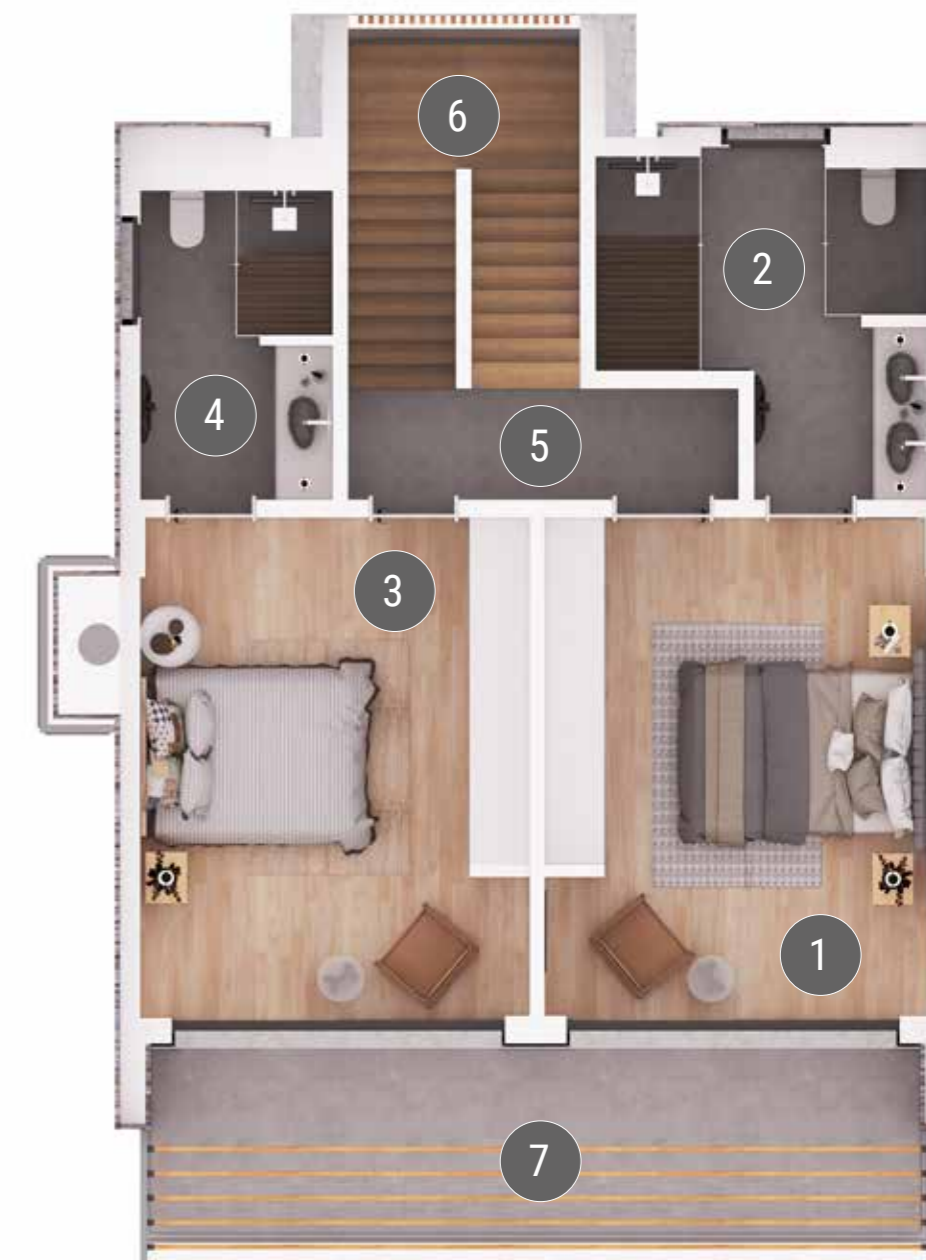
BASEMENT FLOOR

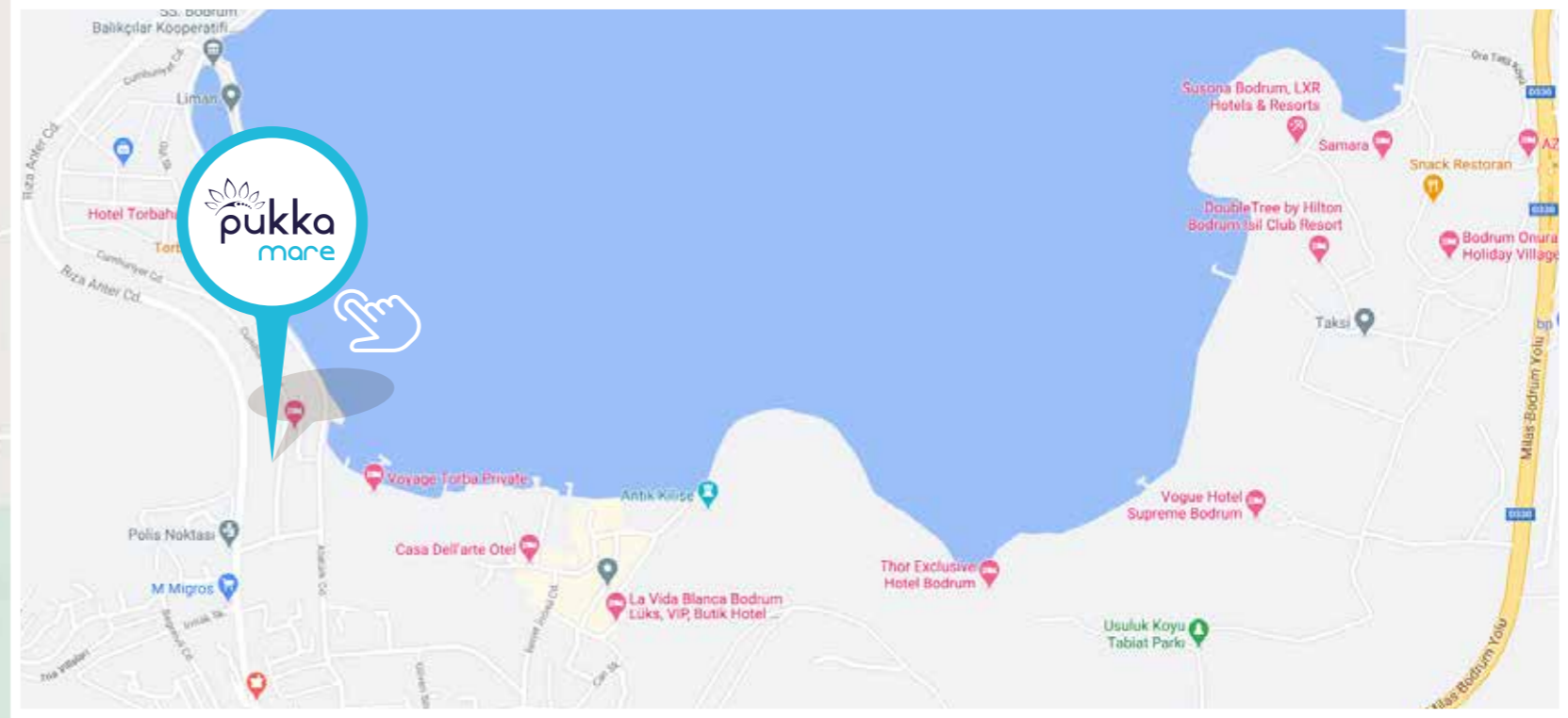
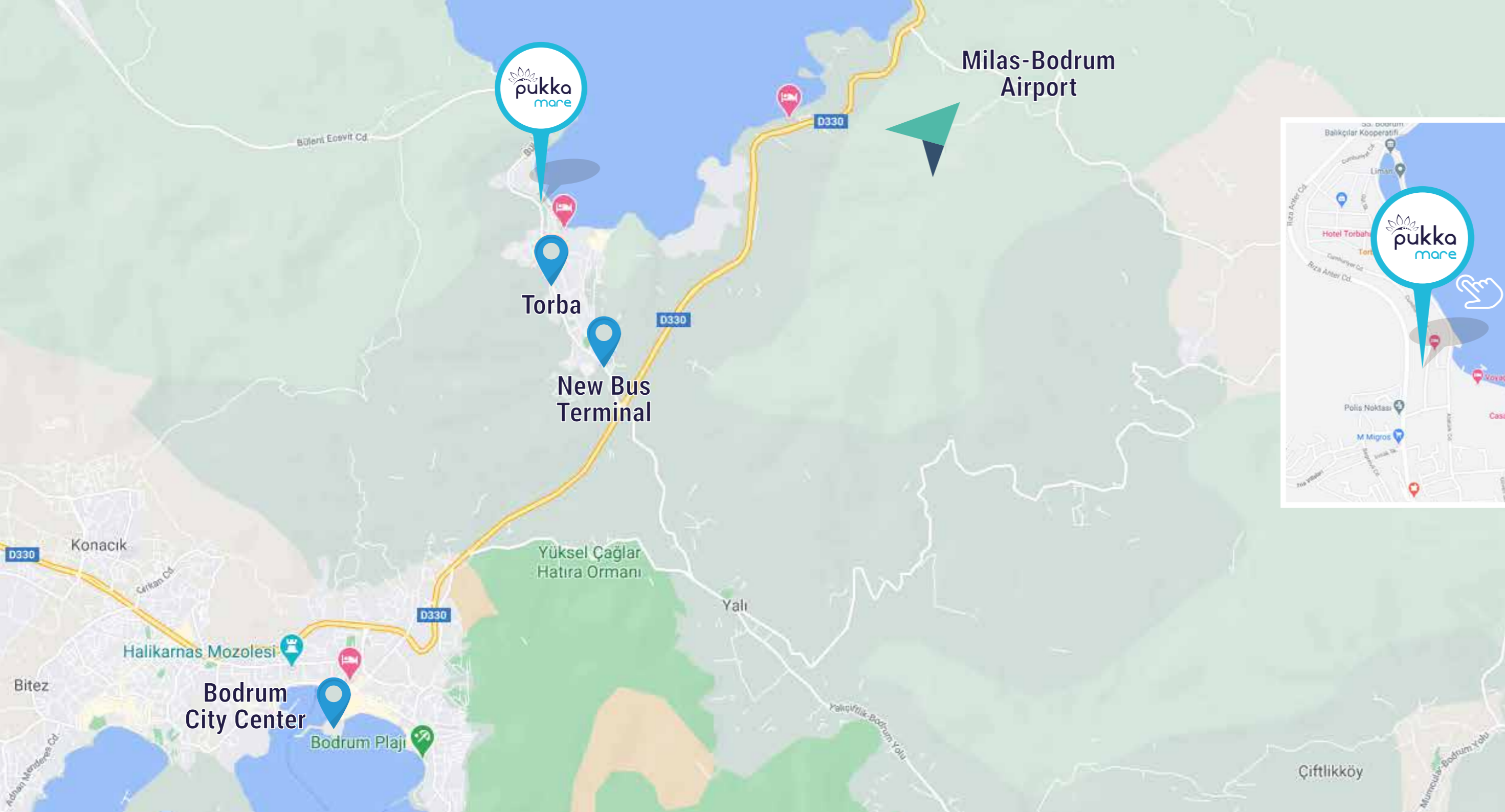
| | |
|------------------------|----------------------|
| ① Bedroom | 12,70 m ² |
| ② Bathroom | 4,70 m ² |
| ③ Dressing Room | 3,70 m ² |
| ④ Court | 5,50 m ² |
| ⑤ Maid's Room | 7,00 m ² |
| ⑥ Bathroom | 2,60 m ² |
| ⑦ Laundry Room/Storage | 8,20 m ² |
| ⑧ Court | 2,30 m ² |
| ⑨ Aisle | 9,60 m ² |
| ⑩ Control Room | 3,10 m ² |
| ⑪ Stairwell | 7,30 m ² |
| ⑫ Garage Passage | 9,15 m ² |



FIRST FLOOR

| | |
|--------------------|----------------------|
| ① Master Bedroom | 18,50 m ² |
| ② En-suit Bathroom | 9,00 m ² |
| ③ Bedroom | 18,50 m ² |
| ④ Bathroom | 5,70 m ² |
| ⑤ Aisle | 4,10 m ² |
| ⑥ Stairwell | 7,30 m ² |
| ⑦ Balcony | 14,80 m ² |





**Milas-Bodrum
Airport**
25 min.



**Bodrum
City Center**
10 min.



**New Bus
Terminal**
5 min.


location



Torba Mah. Cumhuriyet Cad. No: 7-9
Bodrum/MUĞLA - TURKEY

Main Office

Müskebi Mah. Kolej Sok. No: 10/2
Bodrum/MUĞLA - TURKEY

 **T** +90 252 358 58 84
M +90 549 721 38 00

info@egegrupinsaat.com
www.pukkabodrum.com 

